

INFOPACK



APPLY NOW



Erasmus+ Youth
Exchange



BUSINESS WITH A MISSION

Empowering Youth to Create Social Impact
Through Innovative Business Ideas

4-13 November, 2025

LITHUANIA

42 youth from Lithuania, Greece, Romania,
Czech Republic, Bulgaria, Turkey

**AGE:
17-25**



Funded by
the European Union

We are glad to welcome you to the youth exchange
project

“Business with a Mission”

and look forward to meeting you in Lithuania.

Please read all the provided information carefully and
do not hesitate to ask questions if needed.





Funded by
the European Union



OBJECTIVES OF THE PROJECT

The project aims to give young people the opportunity to learn about the concept and development processes of social business, emphasizing the importance of social responsibility and sustainability. **The goal of the project** is to increase the awareness of young people about social entrepreneurship, develop entrepreneurial skills and provide practical experience in solving social problems.

Objectives:

-  To teach young people to understand the social business model and its benefits, deepening their knowledge about the creation and management of social businesses.
-  To motivate young people to become social entrepreneurs, providing knowledge about social problems and encouraging the generation of ideas for their solution.



Funded by
the European Union



OBJECTIVES OF THE PROJECT

The youth exchange will be based on a mix of non-formal education methods.

Activities will be in English.

The methodology is based on non-formal education methods including presentations, role plays, simulations, debate, video creation, etc.

The project activities will be preparation, introduction, getting to know each other, workshops, outdoor activities, intercultural evenings, visits, reflection and evaluation according to agenda.



Funded by
the European Union



PARTICIPATING ORGANISATIONS

LITHUANIA	Eivydu kaimo bendruomene "Rukupis"
GREECE	EVROPAIKO ETHELONTIKO KAI EKPAIDEFTIKO KENTRO
ROMANIA	Asociatia GAL Somes-Nadas
CZECHIA	Youth and World z.s.
BULGARIA	Geya Foundation
TURKIYE	Yenilikçi Eğitim ve Girişim Derneği



Funded by
the European Union



ADVANCE PLANNING VISIT (APV) INFORMATION

2-4 September, 2025



Funded by
the European Union



Each partner organization must send **a leader** to the meeting.



The advance planning visit will be held:

Arrival day: 2nd of September
Departure day: 4th of September

APV meeting venue:
Guest house “Villa Kaunensis”
Address: Rotušės aikštė 21, Kaunas city,
Lithuania
<https://www.villakaunensis.lt>

COUNTRY	TRAVEL DISTANCE (from home to project venue)	TRAVEL BUDGET (amount per person in euro)
GREECE	2000-2999 km	Up to 395.00
ROMANIA	500-1999 km	Up to 309.00
CZECHIA	500-1999 km	Up to 309.00
BULGARIA	500-1999 km	Up to 309.00
TURKIYE	2000-2999 km	Up to 395.00

TRAVEL PLAN for APV

Your travel budget consists of:

1. Inside travel in your country;
2. International travel (flights, bus or train – round trip);
3. Arrival airport/station – Kaunas – departure airport/station.

You can fly to Vilnius or Kaunas airport.

If you fly to Vilnius, you can travel to Kaunas by public transport:

- bus tickets <https://www.autobusubilietai.lt/en>
- train tickets <https://bilietas.lt/glink.lt/>
- airport express <https://www.ollex.lt/en>



**Travel tickets MUST be approved
by project organizers before
buying!**

YOUTH EXCHANGE INFORMATION

4-13 November, 2025



Funded by
the European Union



SELECTION OF PARTICIPANTS AND RESPONSIBILITIES

All organizations are **responsible** for the preparation, support, monitoring of participants together with the hosting team.

Each partner will take care of the selection process giving priority to youth that never took part in Erasmus+ mobilities, AGED 17-25 AND NO AGE LIMIT FOR THE GROUP LEADER (18+).

The partners undertake to sign and comply the partnership agreement, which governs the legal obligations and rights of partner organizations. Each partner will participate in and support the follow-up activities and the dissemination strategy.

TARGET GROUP OF THE PROJECT



Each national group will consist of **7** participants (6 youngsters + 1 leader).
In total: 42 participants.



Participants: 17-25 years old. (There is no age limit for a leader of the group).
Gender balance is expected !

Basic English language skills are necessary.



Each national group has to include **3** participants with fewer opportunities.



Funded by
the European Union



TRAVEL DAYS

The project will last for eight days:
4-13 November, 2025.

Travel days for foreign participants:

Arrival day: 4th of November

Departure day: 13th of November

Lithuanian participants arrive in the morning of the 5th of November and depart in the evening on the 12th of November.



Funded by
the European Union



TRAVEL PLAN for PROJECT

You can fly to Vilnius or Riga (Latvia) airport.

Your travel budget consists of:

- Inside travel in your country;
- International travel (flights, bus or train - round trip);
- Arrival Airport/station - Project venue - Departure airport/station;

We will organize the transport Airport/station - Project venue - Airport/station, because there is no public transport to the project venue.

Transportation will pick you up (in groups) from the airport and take you directly to/from project location.



TRANSFER COSTS:

From/To Riga: 35 Eur (one way per person)

From/To Vilnius 40 Eur (one way per person)

You will have to pay the amount in cash.

Each participant will receive a receipt that can be added to travel expenses.

Travel tickets MUST be approved by project organizers before buying!

FINANCIAL CONDITIONS

Unit costs of your travel expenses (see table below) will be covered by the organizers with the support of the ERASMUS+ program.

The maximum TRAVEL COST reimbursement is based on the distance calculator supported by the European Union.

If the travel costs are exceeding this price limit the rest has to be covered by the participants themselves.

If your distance band is lower - the budget decreases. Please contact us for more information or check [here](#).

We will NOT reimburse the amounts that get over the maximum budget for each participant, or the tickets that did not receive previous APPROVAL from the Lithuanian NGO.

The travel costs will be reimbursed via bank transfer.

COUNTRY	TRAVEL DISTANCE (from home to project venue)	TRAVEL BUDGET (amount per person in euro)
GREECE	2000-2999 km	Up to 395.00
ROMANIA	500-1999 km	Up to 309.00
CZECHIA	500-1999 km	Up to 309.00
BULGARIA	500-1999 km	Up to 309.00
TURKIYE	2000-2999 km	Up to 395.00

Reimbursement may take up to 6 months from the end of project activities, so please plan your budget accordingly.

FINANCIAL CONDITIONS

For the **TRAVEL**, according to the restrictions of the Erasmus+ Programme, **we can only refund if:**

- your travel route is **from your hometown to the venue** in Lithuania and back;
- you have chosen **reasonable and economic means** of transportation (e.g. cheap airlines, 2nd class trains);

Travel tickets that do not respect these rules will not be reimbursed unless prior approval has been obtained from the project coordinator.

You need a **receipt or invoice** for the cost of your plane ticket and the boarding passes or the train/bus tickets. Again: boarding passes (**DON'T LOSE THEM**).

Tickets must include the price, date, and the name of the traveler. If paid in a currency other than euros, the date of purchase must also be indicated (or supported by a bank statement or invoice).

Reimbursement may take up to 6 months from the end of project activities, so please plan your budget accordingly.

FINANCIAL CONDITIONS

Accommodation, food, and planned activities will be covered by the project budget

In order to receive reimbursement money for transportation, please upload ALL original invoices, tickets, boarding passes (**COMPULSORY** - without them you will not be reimbursed), or any other transport documents, a copy of any ticket payment from the bank account to be able to see who paid for the ticket (if paid not in cash).

Travel documents should be uploaded on **Google Drive**.

On some apps the boarding pass disappears after the travel. Remember to take a screenshot!

Reimbursement may take up to 6 months from the end of project activities, so please plan your budget accordingly!

You should also fill in the form of claim for reimbursement (found in **Google drive**).

There is a sample form included to see how it should be filled in.

In this form, please, do not change the amounts from other currencies to the euro. Organizers will count by themselves according to all the rules.

Please note: only the cheapest means of transport/fares are subject to reimbursement. Travel and/or baggage insurance is not covered.

It is possible to come to Lithuania several days earlier or leave several days later after the end of the project. In this case, you will have to cover any extra costs for accommodation and food.



Funded by
the European Union



FINANCIAL CONDITIONS



REIMBURSEMENT OF TRAVEL COSTS WILL ONLY BE DONE:

- ▶ Upon FULL attendance of the program;
- ▶ All travel tickets are uploaded and reimbursement form filled in correctly;
- ▶ Dissemination is completed by sending organisation and participants;
- ▶ The group leader has filled in the official Erasmus+ questionnaire;



PROJECT VENUE



The participants will be accommodated and the activities will take place at the homestead “***Luobos vienkiemis***”.

Address: Sedos st. 11, Luoba village, Skuodas district, Lithuania



Funded by
the European Union



PROJECT VENUE



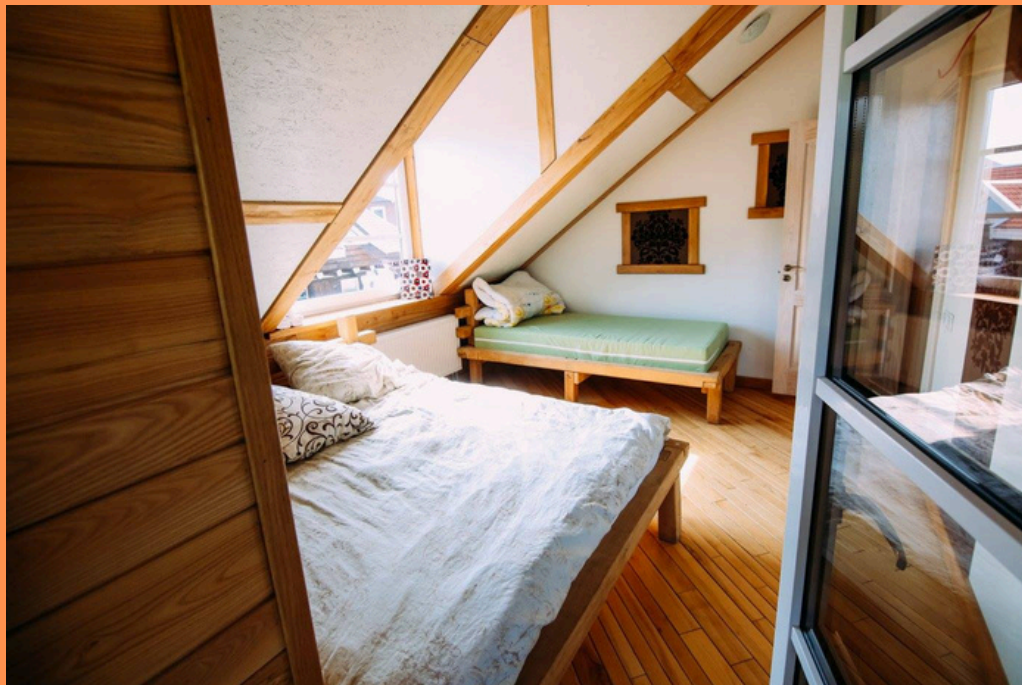
Please note that accommodation will be spread across three different buildings in the territory, each offering rooms of varying sizes due to their unique layouts.

There is:

- one room of 10 beds;
- one room of 9 beds;
- all other rooms include 2 beds.

Toilets and showers are in the corridors.

Participants will be divided in the rooms **by gender**.



▶ Towels are NOT provided. No laundry and ironing services are provided. There is no hair dryer at the venue.

▶ Wi-Fi will be available.

▶ Closest village shop is 4-5 km away (~1 hour *walk* one way). There will not be the chance to go shopping everyday.



Funded by
the European Union



COMMUNICATION

You will have to fill in participant form to ensure that organizers have necessary information for project preparation.

All communication with the participants will be held via WhatsApp group and email.

APPLICATION FORM
for selected participants ONLY!



You will receive invitation to the WhatsApp group after your **participation is confirmed** by your sending organization.



Funded by
the European Union



BEFORE TRAVEL TO LITHUANIA

- Make sure your passport is valid for 6 months counting from the departure day.
- Insurance. Make sure you have insurance for the period of your travel (required by the Erasmus+ rules):
 - Wherever relevant, travel insurance (including damage or loss of luggage);
 - Accident and serious illness (including permanent or temporary incapacity);
 - Death (including repatriation in case of projects carried out abroad).
- If applicable, it is strongly recommended that participants in transnational activities are in possession of a European Health Insurance Card.
- Lithuania has banned alcohol advertising and raised the legal drinking age to 20.
- Smoking – only outside. No smoking inside. Smoking in Lithuania is allowed from 18 years old.
- Energy drinks – in 2014, Lithuania became the first country in the EU to ban the selling of energy drinks to anyone under the age of 18. (<https://www.businessinsider.com/lithuania-bans-energy-drinks-for-minors-2014-11>).

DISSEMINATION OF THE PROJECT



All the participants, with the support from the sending organizations, are supposed to **disseminate the project outcomes and results**, publishing on private profiles and on partners' profile and presenting the results to the local community. The team of the YE will give further information and support participants in any phase. It will be **necessary to provide the proofs** of dissemination and local practice.

Dissemination of the project should include:

- Results achieved during the youth exchange;
- Sharing competences achieved while participating;
- Project name, date and location.

Make sure to use the Erasmus+ Programme logo with any promotion.



**Funded by
the European Union**

All dissemination links must be uploaded to Google drive file **“dissemination”**


All visual materials as project poster, logos can be found in **Google drive.**




Funded by
the European Union




WHAT TO PACK?



Necessary documents, such as passports, travel documents, etc.



Personal care products, such as shower gel, shampoo, comb, towel and etc.




Any medication you will need during your stay.




Reusable water bottle

For using less plastic cups and being sustainable




Comfortable clothes and shoes (please check the weather forecast before packing your luggage).



Earplugs (Extremely Recommended). We will be a big group living together, so earplugs might be useful for a good night's sleep.



Memory Exchange:
Bring a Cup!
Representing your country, city, or something personal you like.



Some laptops will be necessary for working and editing texts/photos/videos.



FOOD

Three meals per day

- Breakfast – a simple self-service buffet every morning.
- Lunch – served individually in portions.
- Dinner – each evening a different country's team will be preparing the dinner.
- Plus two coffee breaks will be provided.

As mentioned in the info pack, the nearest shop is about a 1-hour walk one way.

If you know you'll want specific snacks, fruits, or soft drinks—buy them upon arrival and bring them with you to the project site.

The food budget is limited (just like your travel budget!), so anything beyond main meals and coffee breaks is up to you.

Please note: The kitchen will not be available to accommodate the needs of vegetarians, vegans or any specific diets.



CULTURAL EVENINGS

As part of our cultural evenings, we would like to find out more about your country.

We kindly ask you to prepare an interactive presentation of your country (you can present your country's food, music, traditional dances, games, etc.).

Creativity is the basic requirement.

Participants will also have the opportunity to present their organization and its activities.

You can bring some materials (brochures, posters, PowerPoint presentations, films, photos, etc.).

Be creative! 😊

CONTACT DETAILS

Gabrielė Milienė
Chairwoman of the Community



gabriele.milienne@outlook.com
+370 657 53131



[Eivydu kaimo bendruomenė "Rukupis"](#)



[.@rukupis](#)



Funded by
the European Union

